

## Simcenter FLOEFD for Solid Edge

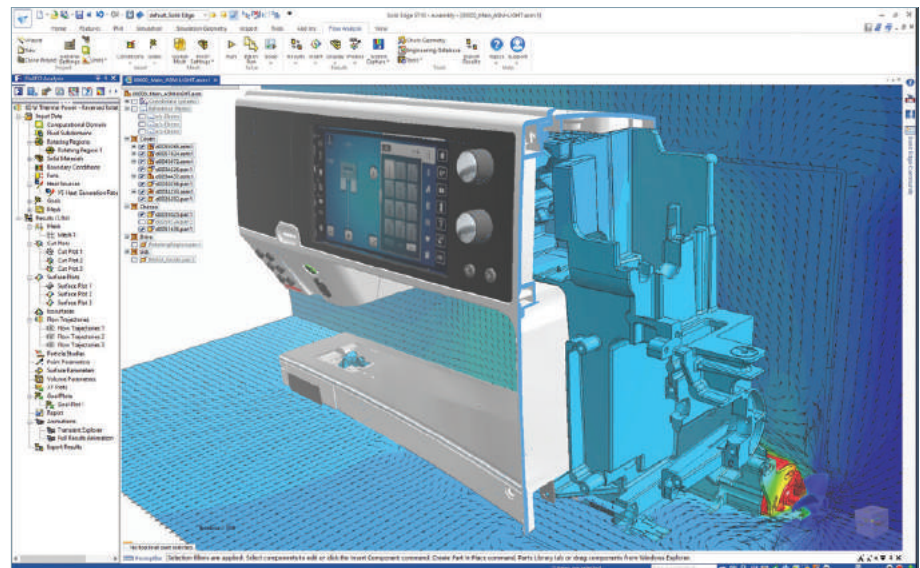
Fluid flow and heat transfer inside Solid Edge

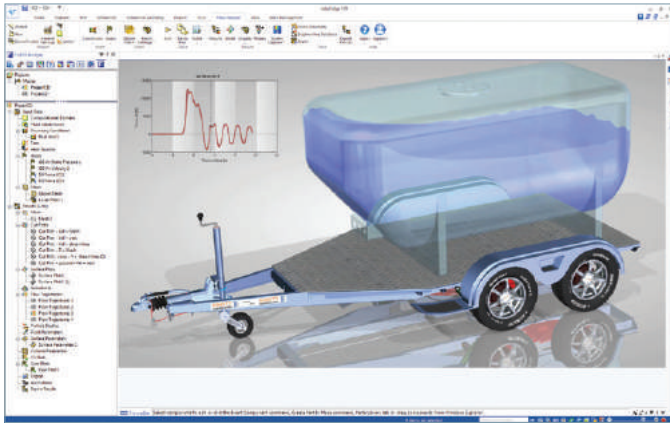
Simcenter FLOEFD for Solid Edge is the only Computational Fluid Dynamics (CFD) analysis tool that is fully embedded in Solid Edge. It enables engineers to frontload simulation by moving CFD simulation early into the design process; thus, enabling design engineers to examine and evaluate design options earlier to obtain optimized product performance and reliability.

Simcenter FLOEFD features:

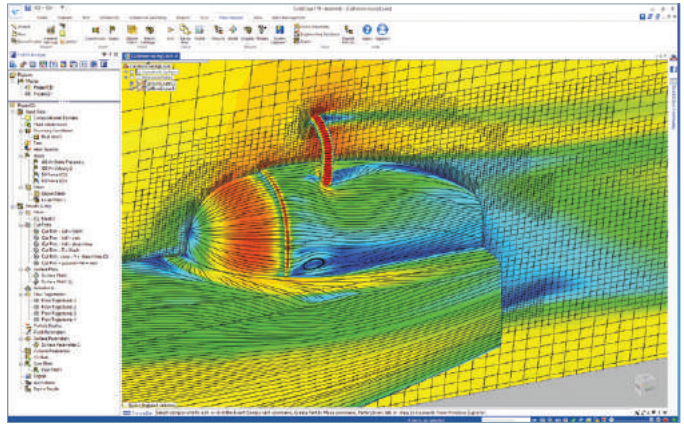
- An intuitive user experience – short learning curve
- Use of native Solid Edge CAD data – no translation or fluid body creation
- Automatic recognition of model change – geometry and simulation data are synchronized
- Fast automated mesher – fast and easy SmartCell™ meshing
- Unique solver – getting accurate results fast for highly complex geometry
- Powerful parametric study and design comparison functionality for easier what-if analysis

Due to ease-of-use, fast meshing and unique solver technology powered by incorporated analytical-empirical models, Simcenter FLOEFD allows for intensive use of simulation and design exploration to gain valuable insight into product behavior.

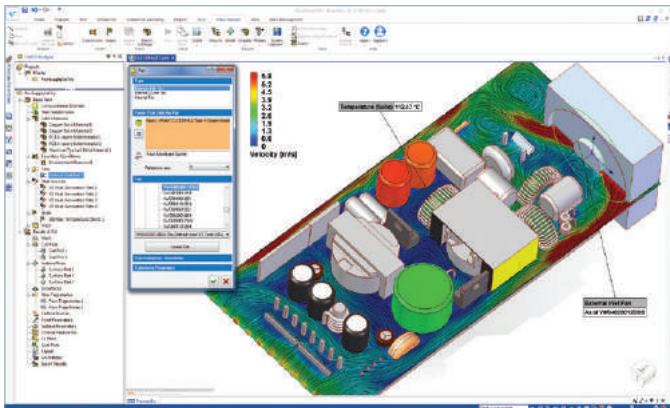




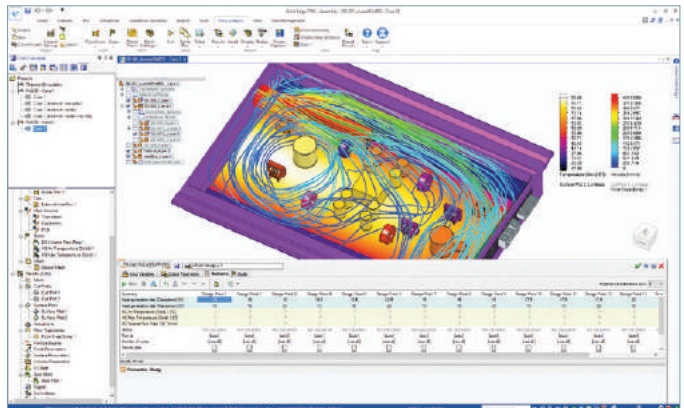
Tight CAD-integrated CFD simulation



Fast and robust automated meshing technology



Intuitive user experience



Parametric studies and design comparison

*“We design and build custom automated heat seal equipment, that uses a resistant wire element in the sealing process. These elements are beyond a simple wire; therefore, we need to make sure they perform as designed. We use Simcenter FLOEFD analysis to optimize these elements, as well as the other components in the sealing head assemblies. It has become very instrumental in our business.”*

Trlby Innovative  
LLC

Siemens PLM Software  
[www.siemens.com/plm](http://www.siemens.com/plm)

Americas +1 314 264 8499  
Europe +44 (0) 1276 413200  
Asia-Pacific +852 2230 3333

© 2019 Siemens Product Lifecycle Management Software Inc. Siemens and the Siemens logo are registered trademarks of Siemens AG. Femap, HEEDS, Simcenter, Simcenter 3D, Simcenter Amesim, Simcenter FLOEFD, Simcenter Flomaster, Simcenter Flotherm, Simcenter MAGNET, Simcenter Motorsolve, Simcenter SCADAS, Simcenter STAR-CCM+, Simcenter Testxpress, Simcenter Soundbrush, Simcenter Sound Camera, Simcenter Testlab and STAR-CD are trademarks or registered trademarks of Siemens Product Lifecycle Management Software Inc. or its subsidiaries in the United States and in other countries. All other trademarks, registered trademarks or service marks belong to their respective holders  
77522-A4 4/19 H