



Siemens PLM Software

Teamcenter Rapid Start

Specifications for a preconfigured PDM deployment

Benefits

- Simplifies common tasks
- Controls and shares mechanical (MCAD) and electronic (ECAD) data
- Collaborate on MCAD designs using multi-CAD data
- Collaborate with suppliers by viewing and marking-up ECAD data with the use of an authoring tool
- Accelerates product development by promoting design re-use
- Provides common best practices for PDM
- Extends the use of PDM to users outside of the engineering department

Summary

The Teamcenter® software Rapid Start configuration from Siemens PLM Software delivers the world's most widely implemented product data management (PDM) solution. Teamcenter Rapid Start is pre-configured to deliver a simplified PDM installation and user experience that leverages common best practices and the expertise of Siemens PLM Software. The Rapid Start configuration gets you up and running with PDM quickly and cost-effectively.

Teamcenter Rapid Start offers an easy installation and upgrade process. By choosing preconfigured capabilities, you can minimize the costs of consulting and maintenance. Teamcenter Rapid Start can be upgraded to standard Teamcenter when you need it. With Teamcenter Rapid Start, you can immediately realize the benefits of PDM with confidence that you have a growth path to product lifecycle management (PLM).

Following are the specifications of a Teamcenter Rapid Start deployment. *Note that many of these capabilities are shared with standard Teamcenter deployments, with the exception of those marked with an asterisk (*), which are unique to the Teamcenter Rapid Start configuration. Optional add-ons for Teamcenter Rapid Start are marked by a plus sign (+).*

Multi-CAD and ECAD data management
 Helping to accelerate product development by promoting design re-use, Teamcenter MCAD (mechanical computer-aided design) data management and multi-CAD support enable design teams to create, manage and re-use native design data from multiple CAD systems, including NX™ software and Solid Edge® software from Siemens PLM Software, as well as Autocad, Catia, Creo, Inventor, Pro/Engineer and SolidWorks, all in a single secure environment.

Teamcenter Rapid Start

Teamcenter enables electronic computer-aided design (ECAD) teams to increase productivity by integrating disconnected design flows, managing all of your design, fabrication and assembly data and enabling you to share data across multiple domains. In addition, it supports ECAD integrations with design tools from Mentor, Cadence, Intercept and Altium.

Teamcenter also provides an EDA (electronic design automation) integration gateway to enable you to integrate tools that you develop internally or procure from other third parties. To help reduce product cost and facilitate environmental compliance, Teamcenter Rapid Start enables you to leverage your ECAD part library and make it available for use across multiple ECAD tools.

- Multi-CAD data management
- MCAD data management
- ECAD data management
- Bill-of-materials (BOM) management
- CAD-neutral visualization
- Intelligent part numbering

Partner collaboration

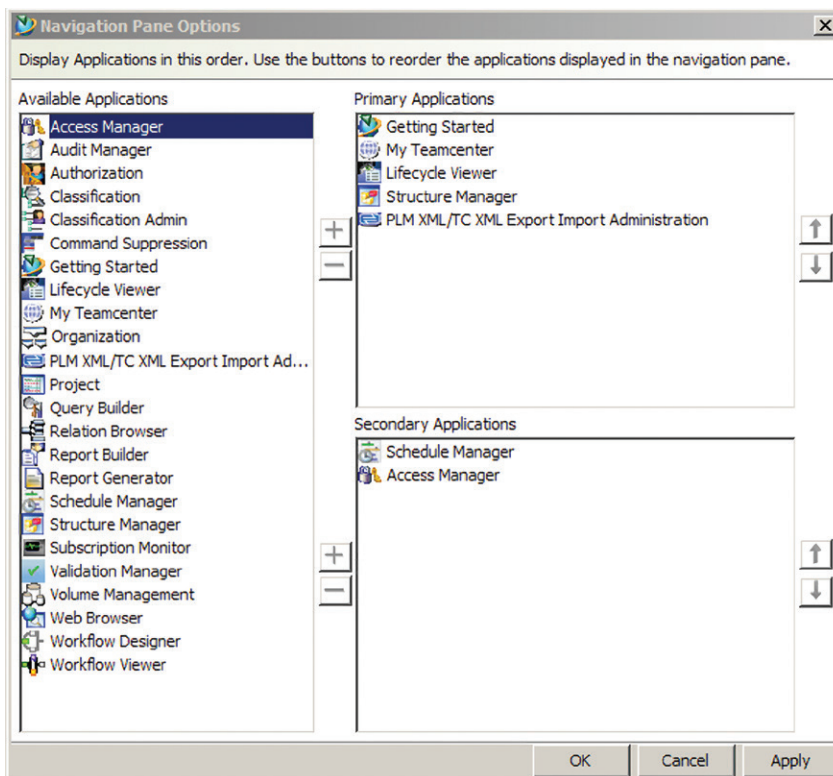
Teamcenter Rapid Start includes a unique XpresReview package capability to give partners who do not use Teamcenter selective access so they can exchange data with Teamcenter Rapid Start. Partners like customers, vendors and suppliers can download the XpresReview viewer free of charge, which allows them to view, markup, measure and section XpresReview packages.

- Review package with XpresReview*
- Export single part*
- Export monolithic JT™ data format for assembly+

Document management

Teamcenter Rapid Start delivers standard integrations with Microsoft Office and Adobe to extend the use of PDM to users outside of the engineering department. These integrations can be used for creating and updating technical publications, process sheets, customer requirements, manufacturing setups, test specifications or any other documents that you may want to manage. You can even interact with product information and workflow processes directly through the familiar Microsoft Office applications.

- Single-feature installation option for Microsoft Office integration*
- Single-feature installation option for translation services*
- Print and plot*



Out-of-the-box applications

Rapid Start delivers a standard set of Teamcenter applications. The menu options only display a subset of Teamcenter applications to simplify the installation and user options.

- Getting Started
- My Teamcenter
- Organization
- Structure Manager
- Workflow Viewer
- Lifecycle Viewer
- Project
- Web Browser
- Relation Browser
- Workflow Designer
- Application Administration
- Query Builder
- Report Builder
- Report Generator
- Command Suppression
- Access Manager
- Audit Manager
- Authorization
- PLM XML/TC XML Export Import Administration
- Subscription Monitor
- Validation Manager
- Volume Management

Preconfigured organization with groups and roles

Teamcenter Rapid Start optimizes the tasks that you perform every day, both as individuals and as a team. Teamcenter Rapid Start offers preconfigured groups and roles that you can use to simplify common tasks. You can use the preconfigured groups and roles, or you can create custom configurations to meet your business needs. The user interface is tailored to each

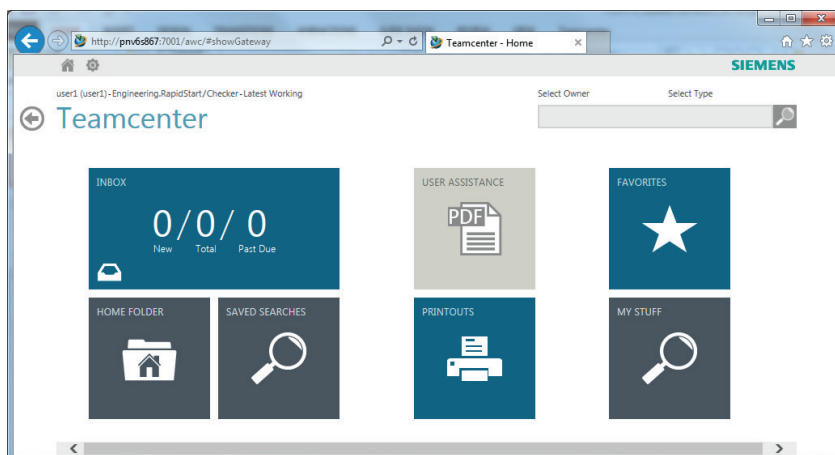
individual user role, only showing menu options and applications required for their tasks. This simplifies user administration, reduces the user learning curve and improves overall usability. Out-of-the-box roles include:

- Engineering Author*
- Engineering Checker*
- Engineering Manager*
- Manager*
- Manufacturing Author*
- Manufacturing Checker*
- Manufacturing Manager*
- Shop Floor Consumer*
- Shop Floor Viewer*
- Consumer*

Preconfigured workflows

Based on the experience Siemens PLM Software has gleaned from thousands of software implementations, Teamcenter Rapid Start comes with a set of preconfigured workflows to help you release your products, including 25 special handlers that are also included in the standard version of Teamcenter. You can use the preconfigured workflows, or you can create custom workflows to meet your business needs. Teamcenter Rapid Start also includes simple and preconfigured change management. For those situations requiring specific process compliance, you can reconfigure and adapt the Teamcenter Rapid Start standard workflows, or create new ones quickly. Out-of-the-box workflows include:

- Change Status to Rejected*
- Change Status to Released*
- Change Status to Review*
- Development Release*
- Engineering_Order*
- Obsolescence Process*
- Production Release*
- Quick Release*
- Status Change*



Preconfigured statuses

To help process workflows, Teamcenter Rapid Start comes with a set of pre-configured statuses. You can use the pre-configured statuses, or you can create custom statuses to meet your business needs. Teamcenter Rapid Start also delivers a configuration management model supporting revision rules, revision status filtering and basic revision effectivity using dates or unit numbers. Out-of-the-box statuses include:

- 10 – Rejected*
- 20 – In Review*
- 30 – Development Release*
- 60 – Production Release*
- 90 – Obsolescence*

Search queries for quick search

- My ItemRevisions (WIP)*
- My ItemRevisions (Released)*
- My Documents
- All ItemRevisions (Released)*

Email

- Send/Compose email with Teamcenter data attached
- Store/Link important emails into Teamcenter

Platform

- Choice of databases (SQL and Oracle)
- Full Teamcenter browser support (IE, plus Mozilla Firefox)
- Full Teamcenter web server support (WebLogic, WebSphere, JBoss, Tomcat)
- Over-the-web (OTW) installer for Rich Client
- Support for all Teamcenter languages

Add-on applications

You can add on the following capabilities to Teamcenter Rapid Start. In addition to these modules, you can also grow your deployment to include any of the standard Teamcenter modules with some changes to your configuration.

- Classification+
- Schedule manager+
- Multi-site collaboration+
- MCAD integrations+
- ECAD integrations+
- ERP integration+
- Visualization levels

Active Workspace

Teamcenter Rapid Start delivers preconfigured roles and workflows for PDM. However, if you want to extend your implementation to reach new users with browser-based access, you can use Active Workspace. Active Workspace provides a simple web interface tailored to the specific needs of PDM users beyond design engineering.

Although additional hardware and configuration may be required, Active Workspace capabilities available with Teamcenter Rapid Start include:

- Active Workspace Client+
- Active Collaboration+
- Active Content Structure+
- Active Workspace Reporting+
- Active Workspace Subscription+
- Digital Signatures+
- Active Workspace Indexing+
- Active Workspace Visualization+
- Solid Edge Integration+
- NX Integration+

Preconfigured Teamcenter Rapid Start functionality that is included with Active Workspace includes:

- Command, menus and type suppression*
- Pre-configured workflows*
- Simple and preconfigured change management*
- Pre-defined reports*
- Shop Floor Viewer*

Teamcenter Rapid Start functionality that is NOT included with Active Workspace is:

- Print and plot*
- XpresReview package*
- Pre-defined queries*

	Teamcenter Rapid Start	Standard Teamcenter
DB Support		
MS SQL	Yes	Yes
Oracle	Yes	Yes
Web server support		
WebLogic	Yes	Yes
Jboss	Yes	Yes
WebSphere	Yes	Yes
Tomcat	Yes	Yes
Languages	Same	Same
Over the web installer	Yes	Yes
Visualization		
Base	Yes	Yes
Standard	Optional	Optional
Professional	Optional	Optional
Mockup	Optional	Optional
MCAD Integrations		
NX	Optional	Optional
Solid Edge	Optional	Optional
CATIA	Optional	Optional
Creo	Optional	Optional
Inventor	Optional	Optional
AutoCAD	Optional	Optional
SolidWorks	Optional	Optional
ECAD Integrations		
Altium Designer	Optional	Optional
Mentor Expedition	Optional	Optional
Cadence	Optional	Optional
Mentor PADS	Optional	Optional
EDA Gateway	Optional	Optional
Capabilities		
Preconfigured installation	Yes	Manual configuration required
Intelligent part numbering	Yes	Yes
Basic change management	Yes - preconfigured	Manual configuration required
Xpress review	Yes - except with Active Workspace	N/A
Document management	Yes	Yes
Workflows	Yes - preconfigured	Manual configuration required
Roles, groups, users	Yes - preconfigured	Manual configuration required
Microsoft Office integration	Yes	Yes
Classification	Optional	Optional
Schedule manager	Optional	Optional
Multi-site	Optional	Optional
Teamcenter gateway extension package	Optional	Optional
Gateway for SAP and Oracle	Optional	Optional
Active workspace	Yes	Yes

	Teamcenter Rapid Start	Standard Teamcenter
Options and variants	Expand to Teamcenter	Optional
Requirements management	Expand to Teamcenter	Optional
Systems engineering	Expand to Teamcenter	Optional
Portfolio management	Expand to Teamcenter	Optional
4GD	Expand to Teamcenter	Optional
Multiple structure management	Expand to Teamcenter	Optional
Advanced product configurator	Expand to Teamcenter	Optional
Substance compliance	Expand to Teamcenter	Optional
Materials management	Expand to Teamcenter	Optional
Content management	Expand to Teamcenter	Optional
Briefcase browser	Expand to Teamcenter	Optional
Supplier collaboration	Expand to Teamcenter	Optional
Simulation management	Expand to Teamcenter	Optional
Service lifecycle management	Expand to Teamcenter	Optional
Maintenance, repair and overhaul	Expand to Teamcenter	Optional
Manufacturing process management	Expand to Teamcenter	Optional
Formula, package and brand management	Expand to Teamcenter	Optional
Community Collaboration	Expand to Teamcenter	Optional
Reporting and analytics	Expand to Teamcenter	Optional
Change management	Expand to Teamcenter	Optional
Quality management	Expand to Teamcenter	Optional
Product cost management	Expand to Teamcenter	Optional
Industry catalyts	Expand to Teamcenter	Optional

Contact

Siemens PLM Software

Americas +1 314-264-8499

Europe +44 (0) 1276 413200

Asia-Pacific +852 2230 3308

www.siemens.com/plm

© 2016 Siemens Product Lifecycle Management Software Inc. Siemens and the Siemens logo are registered trademarks of Siemens AG. D-Cubed, Femap, Fibersim, Geolus, GO PLM, I-deas, JT, NX, Parasolid, Solid Edge, Syncrofit, Teamcenter and Tecnomatix are trademarks or registered trademarks of Siemens Product Lifecycle Management Software Inc. or its subsidiaries in the United States and in other countries. AutoCAD is a registered trademark of Autodesk, Inc. Catia is a registered trademark of Dassault Systèmes Corporation. Creo is a registered trademark of PTC. Inventor is a registered trademark of Autodesk, Inc. Pro/Engineer is a registered trademark of Parametric Technology Corporation or its subsidiaries in the United States and in other countries. SolidWorks is a registered trademark of Dassault Systèmes Solidworks Corporation. 39943-Y22 1/16 H