

## DIGITAL INDUSTRIES SOFTWARE

# What's new in Solid Edge 2025

Innovate without limits

### Benefits

- Access Solid Edge in a secure SaaS environment with Solid Edge X.
- Open Teamcenter-managed assemblies 50% faster and streamline workflows.
- Simplify sheet metal designs with enhanced bend calculation and accuracy.
- Enhance 3D models with advanced Model Based Definition and dimensioning tools.
- Personalize workflows with redesigned command bars and context toolbars.
- Collaborate easily using Teamcenter Share with faster large file uploads.
- Flexibly access more add-on capabilities with value-based licensing.

### Summary

Solid Edge® 2025 introduces Solid Edge X, Solid Edge software in a secure SaaS environment, with new Artificial Intelligence (AI) tools to help you work smarter. Solid Edge 2025 also includes a range of enhancements to increase modeling speed, improved etch and bend features for sheet metal design, and simplified Model-based definition (MBD) creation. Expand your innovation toolkit with access to advanced capabilities on demand with token licensing bundles and take advantage of seamless integration with industry-leading solutions across the Siemens Xcelerator portfolio.

Solid Edge, which is part of the Siemens Xcelerator portfolio, the comprehensive and integrated portfolio of software, hardware and services, provides you with an innovative and comprehensive approach to product development for the mainstream market.

**SIEMENS**

[solvedge.siemens.com](https://solvedge.siemens.com)

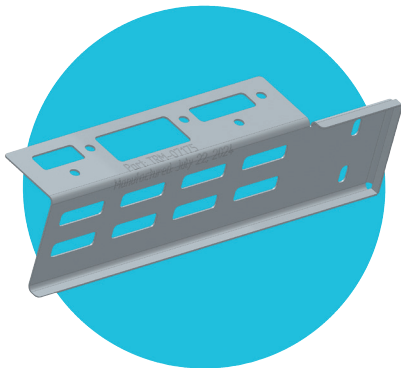


**Solid Edge X: Unlock innovation on the cloud with Solid Edge X**

Solid Edge X delivers Solid Edge software in a secure SaaS environment, offering all the features you love in a flexible, secure experience. With automatic updates and cloud-based built-in data management, Solid Edge X is designed to reduce IT complexity and costs. You can seamlessly collaborate across disciplines and connect globally with colleagues and customers. In Solid Edge X, the new Artificial Intelligence-powered tools offer real-time assistance and helps minimize disruptions to your workflows.

**Design faster with more intuitive, streamlined operations**

Get to work faster with improved Teamcenter integration and design better with streamlined operations. Open Solid Edge assemblies managed by Teamcenter up to 50 percent faster with accelerated download speeds and get to work quickly as assemblies load. A new quick pattern command makes the patterning of assembly features a breeze. Apply, edit and create face styles on parts directly from the assembly environment, and pick styles from other parts with the new style picker tool. Improved BOM view and Pathfinder management also save time and reduce complexity when working with large assemblies.

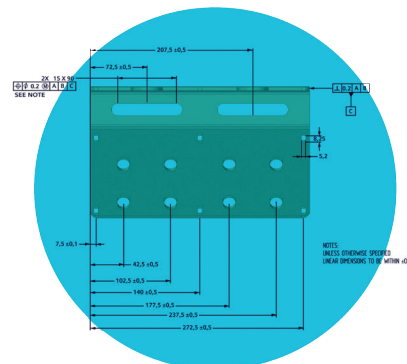


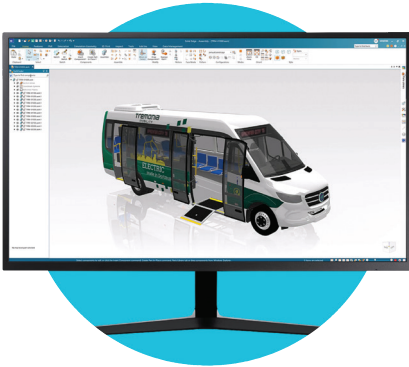
**Elevate sheet metal design with new etch and bend features**

Continual improvements to Solid Edge's industry leading sheet metal capabilities streamline workflows and improve precision. The updated features support complex geometries, offering improved bend calculation, making it easier to create accurate sheet metal parts. Bend deduction and bend allowance allow you to control material conditions related to manufacturing and tooling. New etch features now support bends and curved faces, automatically placing etches on all relevant faces, while enhanced bend support shows detailed properties and calculation methods.

**Speed and simplify Model-based definition (MBD) creation**

Model Based Definition enhancements give you the tools to quickly detail 3D models more easily and accurately. With new hybrid annotations, insert dimensions and feature control frames into your designs with an efficient, all-in-one workflow. Feature control frames and updated surface texture symbols help users adhere to ever-changing standards, while automatic dimensioning has been expanded to further ensure consistency and minimize errors.



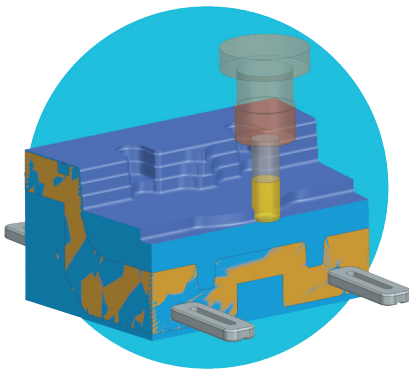
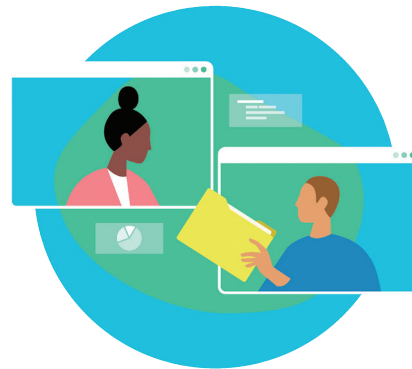


**Customize your design experience and enhance workflows**

New customization options make it easier for both new and experienced users to tailor their Solid Edge experience, delivering a more intuitive and personalized design environment. With features like redesigned vertical command bars and enhanced context toolbars, you can streamline your workflows and enjoy greater flexibility. The Discovery Center offers a wide range of resources, learning materials and free trials, ensuring that users of all levels can quickly get up to speed and maximize their productivity.

**Connect, collaborate, share – anytime, anywhere**

Start collaborating directly from the Solid Edge environment with the next-generation tools of Teamcenter Share. Share assemblies and track tasks seamlessly within Solid Edge, and create, edit and delete projects as needed. You can flexibly share and unshare projects with team members and create, reassign and close tasks as projects progress. Don't let large files slow you down – Teamcenter Share supports the upload of files up to 500GB, faster than ever before.

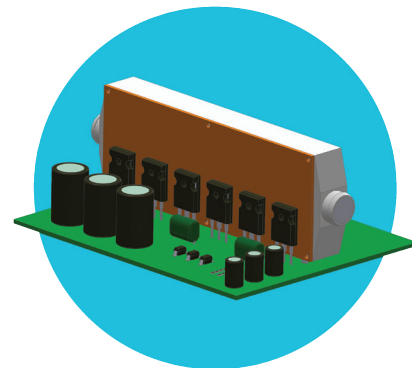


**Simplify machining with smart assistance and advanced operations**

Boost programming and machining performance with new enhancements to Solid Edge CAM Pro. Smart assistance automatically recommends the best operations, streamlining toolpath creation and easing the programming process. Advanced quick roughing and the zig zag milling features simplify offset roughing and face milling. Automatic hole machining also makes selecting prismatic features like slots, steps and holes effortless.

**Faster mesh generation, advanced flow and heat simulation**

Improved integration with Simcenter FLOEFD for Solid Edge allows you to directly import complex CAD models for analysis, saving time in the simulation setup process. Simplified fluid flow and heat transfer analysis make it easy to evaluate product performance under various conditions. Mesh generation for convergent, faceted and STL geometries is now even faster. With new templates and tools, setting up complex simulations is easier and more streamlined. Additionally, its user-friendly features and robust support resources enable you to design smarter and faster.



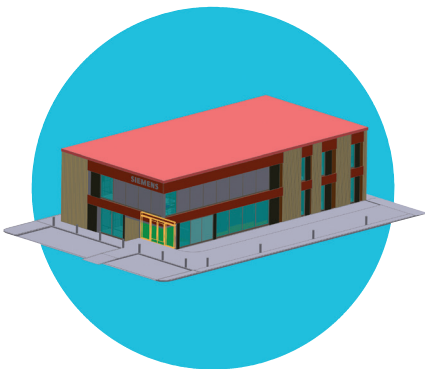
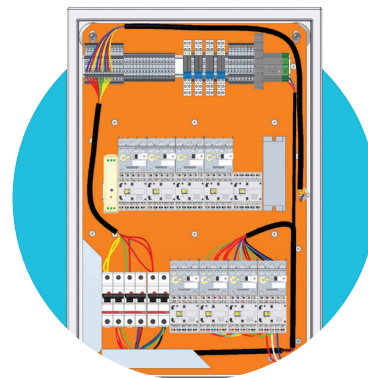


**Access even more add-on capabilities with flexible licensing**

Take advantage of a continually growing list of advanced capabilities available through value-based licensing. Cost-effective token bundles provide instant, on-demand access to Solid Edge add-on products, from generative design to simulation. New machine and piping libraries, CATIA translators, Solid Edge P&ID Design and Solid Edge Piping Design add-on can now be accessed with value-based licensing, with Solid Edge Design Configurator and Solid Edge Inspector Standard and Advanced being added soon.

**Create electrical schematics with new web-based tools**

Solid Edge 2025 integrates with Capital X Panel Designer, a new cloud-native electrical design tool from Siemens, allowing designers and engineers to create electrical schematics quickly and efficiently. Available on any device, Capital X Panel Designer delivers an intuitive and accessible platform to enhance electrical design capabilities -- improving workflows and reducing overhead costs.

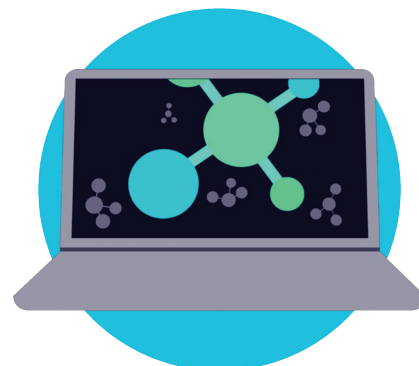


**Optimize design projects with NX interoperability and IFC file support**

Unmatched interoperability between Solid Edge and NX allows you to reuse data and work seamlessly with the solution that meets your needs. Easily transfer section views, advanced PMI, kinematic data and more between Solid Edge and NX. New enhancements support the import and export of International Foundation Class (IFC) file types, a standard in the construction and building industry, allowing users to store and exchange information about construction projects without translation.

**Define material data with Teamcenter Integrated Material Management**

Increased support between Teamcenter and Solid Edge means even better performance from the industry-leading data management solution. New integration with Teamcenter Integrated Material Management, a PLM-managed source of material definitions, allows you to control material data for accuracy, consistency, traceability and security. Teamcenter Integrated Material Management optimizes material usage, reducing waste and environmental impact, supporting sustainability in manufacturing and can ensure accurate, eco-friendly material selection.



### Extending value

The Solid Edge portfolio, part of the Siemens Xcelerator portfolio, is an integrated set of powerful, comprehensive, and accessible tools that advance all aspects of the product development process. Solid Edge addresses today's complex challenges with automated digital solutions that cultivate creativity and collaboration.

By harnessing the latest innovative technologies in mechanical and electrical design, simulation, manufacturing, publications, data management and cloud-based collaboration, Solid Edge dramatically shortens time-to-market, provides greater production flexibility, and significantly reduces costs with its collaborative and scalable solutions.

For more information, visit [siemens.com/solid-edge-2025](https://siemens.com/solid-edge-2025).

### Minimum system configuration

- Windows 10 Enterprise or Professional (64-bit only) version 1809 or later
- Java 8 and above, 64-bit
- 16 GB RAM
- 65K colors
- Screen resolution: 1920 x 1080
- 8.5 GB of disk space required for installation

**Siemens Digital  
Industries Software**  
[siemens.com/software](https://siemens.com/software)

Americas  
1 800 498 5351

Europe  
00 800 70002222

Asia-Pacific  
001 800 03061910

For additional numbers, click [here](#).

© 2024 Siemens. A list of relevant Siemens trademarks can be found [here](#). Other trademarks belong to their respective owners.

86281-D2 10/24 H